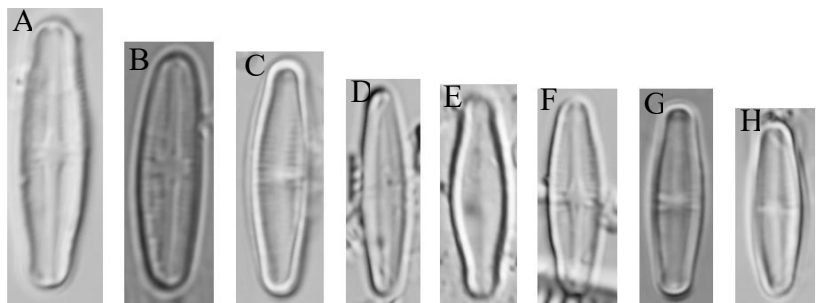


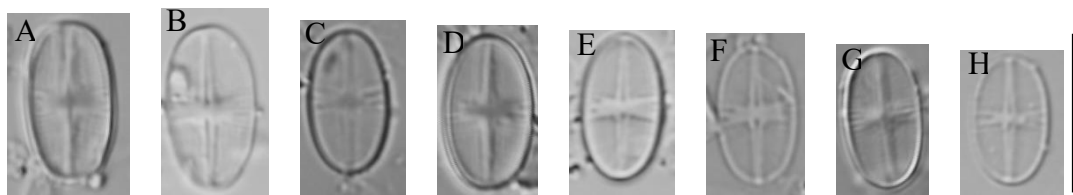
Pinto *et al.*, 2020. Diatom size plasticity at regional and global scales. *Limnetica* (39)1, 2020: 387-403

**Supplementary information** – Light Microscope (LM) photographs of the species that were common in the four river types analysed. *Fotografias de microscopia ótica das espécies que foram comuns nos quatro tipos de rio analisados.*

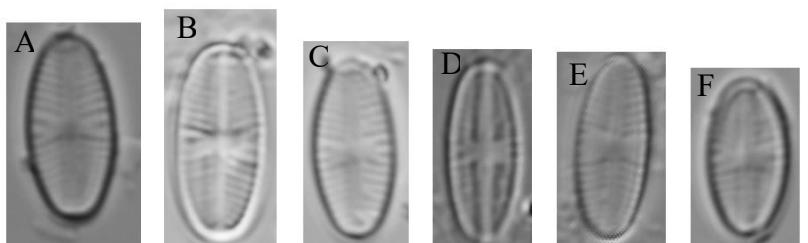
**Figure 1** - *Achnantheidium minutissimum* (LM) from Large Northern rivers (A, G), from Northern Mountain streams (B, F), from Littoral rivers (C, E) and from Small Northern rivers (D,H). The scale bar (10  $\mu$ m) applies to figures 1A-1H. – *Achnantheidium minutissimum* (MO) provenientes dos rios do Norte de Média-Grande Dimensão (A, G), dos rios Montanhosos do Norte (B, F), dos rios do Litoral-Centro (C, E) e dos Rios do Norte de Pequena Dimensão (D, H). A barra de escala (10  $\mu$ m) aplica-se às figuras 1A – 1H.



**Figure 2** – Ralph valves of *Achnanthydium subatomoides* (LM) from Large Northern rivers (A,H), from Small Northern rivers (B, E), from Northern Mountain streams (C, F) and from Littoral rivers (D, G). The scale bar (10  $\mu\text{m}$ ) applies to figures 2A-2H. – *Valvas com rafe de Achnanthydium subatomoides (MO) provenientes dos rios do Norte de Média-Grande Dimensão (A, H), dos rios do Norte de Pequena Dimensão (B, E), dos rios Montanhosos do Norte (C, F) e dos rios do Litoral Centro (D, G). A barra de escala (10  $\mu\text{m}$ ) aplica-se às figuras 2A – 2H.*

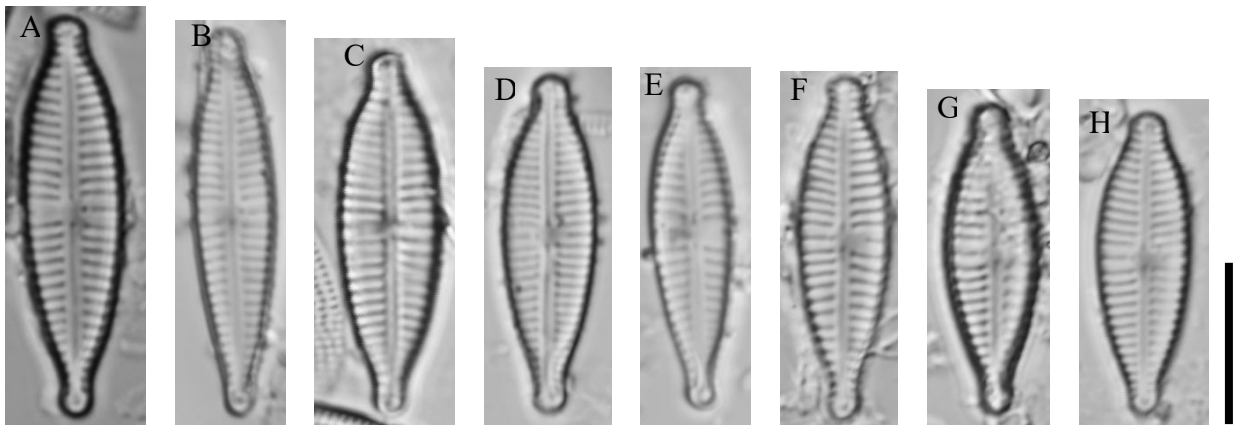


**Figure 3** - *Eolimna minima* (LM) from Large Northern rivers (A, F), from Small Northern rivers (B, C) and from Littoral rivers (D, E). The scale bar (10  $\mu\text{m}$ ) applies to figures 3A-3F. – *Eolimna minima (MO) provenientes dos Rios do Norte de Média-Grande Dimensão (A, F), dos rios do Norte de Pequena Dimensão (B, C) e dos rios do Litoral-Centro (D, E). A barra de escala (10  $\mu\text{m}$ ) aplica-se às figuras 3A – 3F.*



**Figure 4** – *Gomphonema parvulum* (LM) from Littoral rivers (A, C), from Northern Mountain streams (B, E), from Large Northern Rivers (C, H) and from Small Northern rivers (F, G). The scale bar (10  $\mu$ m) applies to figures 4A-4H. – *Gomphonema parvulum* (MO) provenientes dos rios do Litoral-Centro (A, C), dos rios Montanhosos do Norte (B, E) e dos rios do Norte de Média-Grande Dimensão (C,H) e dos rios do Norte de Pequena Dimensão (F, G). A barra de escala (10  $\mu$ m) aplica-se às figuras 4A – 4H.

4



**Figure 5** - Raphless valves of *Karayevia oblongella* (LM) from Littoral rivers (A,C), from Small Northern rivers (B,F) and from Large Northern rivers (D, E). The scale bar (10  $\mu$ m) applies to figures 5A-5F. – Valvas sem rafe de *Karayevia oblongella* (MO) provenientes dos rios do Litoral-Centro (A,C), dos rios do Norte de Pequena Dimensão (B, F) e dos rios do Norte de Média-Grande Dimensão (D, E). A barra de escala (10  $\mu$ m) aplica-se às figuras 5A-5F.

